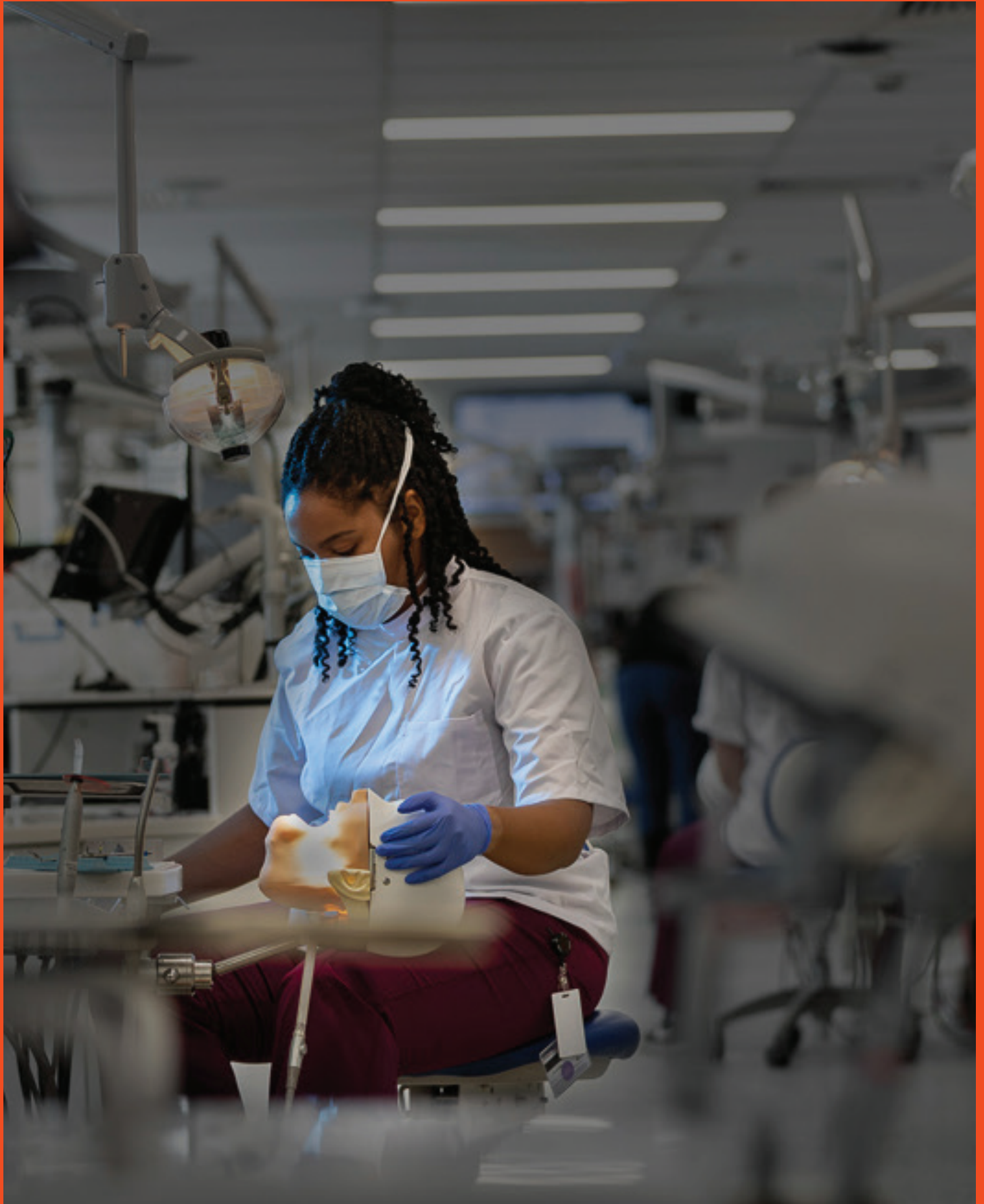


**Chair Lifespan Oral Health,
Associate Professor or
Professor**
Candidate Information Pack



THE UNIVERSITY OF
SYDNEY





We acknowledge the tradition of custodianship and law of the Country on which the University of Sydney campuses stand. We pay our respects to those who have cared and continue to care for Country.

Chair Lifespan Oral Health Associate Professor or Professor *Faculty of Medicine and Health Sydney Dental School*

Candidate information Pack (JR:0115802)

Cover: Sydney Dental School Image

Left (and inside back cover): *Spine*
3, 2018, concrete, concrete oxide,
hematite, artwork on the side of the
Carslaw Building by Dale Harding,
descendant of the Bidjara, Ghungalu and
Garingbal peoples

About the Faculty	4
About Sydney Dental School	6
About the Position	8
About the University of Sydney	10
Higher Education in Australia	18
Living and Working in Sydney	20
How to Apply	24

About the Faculty

The Faculty of Medicine and Health

The **Faculty of Medicine and Health**, the largest division of the University and is dedicated to attracting and developing the brightest minds in health education and research to make and shape the future of health.

The Faculty of Medicine and Health operates in four geographically dispersed Health Precincts (three metropolitan and one regional/rural). Patyegarang (Central Sydney Precinct), Baluderry (Western Precinct), Arabanoo (Northern Precinct) and the Regional/Rural precinct. In these Health Precincts, University facilities are co-located with hospitals, industry, community organisations and medical research institutes. Visit sydney.edu.au/medicine-health/about/locations-and-facilities.html for more information.

Academic Schools

The Faculty comprises seven academic schools offering a vast range of health courses and engaging in research across all medicine and health disciplines working in partnership with numerous health and industry partners.

- **Sydney School of Medical Sciences** encompasses seven multidisciplinary research themes and delivers teaching into a variety of programs.
- **Sydney Dental School** is Australia's first dental school. It is based around integrated research, teaching and clinical practice structured around five disciplines in partnership with the Sydney Dental Hospital, Nepean Hospital and the Westmead Centre for Oral Health, as well as other local health district dental hospitals in remote, regional and rural NSW.
- **Sydney Medical School** is Australia's first medical school. Its research focuses on both discovery and translating discoveries into improved healthcare. It teaches students enrolled in our specialist graduate medical program as well as undergraduate and postgraduate students. It encompasses nine clinical schools, located in major teaching hospitals in the Sydney metropolitan area and in regional hospitals across NSW, offering placements, teaching and research opportunities to the Faculty's students.
- **Sydney Nursing School** conducts research that aims to improve patient experience with an impact on health policy. Students gain practical, hands-on experience in dedicated clinical simulation facilities.
- **Sydney Pharmacy School** covers research in pharmaceutical and clinical sciences ranging from the design, synthesis and testing of drugs to the clinical and sociological aspects of pharmacy and health services research.

- **Sydney School of Health Sciences** research and teaching activities are structured around seven health science disciplines. It partners with local and global organisations and works closely with people and communities to identify solutions that directly translate to health benefits. It offers undergraduate and master's courses and three majors across the seven disciplines.
- **Sydney School of Public Health** is Australia's first school of public health. Its researchers work alongside institutions such as the World Health Organization, the Gates Foundation and Australian governments at local, state and federal levels to bring the benefits of public health policy and practice to the people who need it most. It offers a range of postgraduate course options to public health professionals from a variety of health and non-health backgrounds.

Medical Research Institutes

The Faculty's research endeavours are organised into research centres (Flagships, impact and incubators) and networks. The seven Flagship centres conduct world-leading research to address significant, long-term challenges in cancer (**The Daffodil Centre**), mental health and substance abuse (**The Matilda Centre**), infectious diseases (**Sydney Infectious Diseases Institute**), musculoskeletal health (**Sydney Musculoskeletal Health Centre**), clinical trials (**NHMRC Clinical Trials Centre**), the health of Aboriginal and Torres Strait Islander peoples (**The Poche Centre for Indigenous Health**) and vision science (**Save Sight Institute**). For more information about these individual centres, as well as other research groups and initiatives, visit: sydney.edu.au/medicine-health/our-research/research-centres.html

The Faculty is affiliated with five independent medical research institutes (**Centenary Institute**, **Children's Medical Research Institute**, **Heart Research Institute**, **Melanoma Institute Australia**, **The Westmead Institute for Medical Research**) that engage with the faculty through one or more of its precincts.

For more information on working in the Faculty of Medicine and Health, please see the videos on [working with us](#).

About the Faculty

12,103

total student enrolments

4,568

undergraduate students

7,535

postgraduate coursework students

12,947

total student enrolments

>15,000

total student placements

>95,000

alumni

4,703

undergraduate students

6,576

postgraduate coursework students

3,800+

affiliate academics

Rankings:

Ranked #1 or 2 in Australia and in the TOP 20 in the world (QS 2022) in: Medicine, Anatomy and Physiology, Nursing, Pharmacy and Pharmacology, and Sport-related sciences (incl., physical therapy, sports therapy, and rehabilitation)

Key statistics

Research output generated over the past 5 years (2017–2021):

\$1.2 billion in research income, incl. \$524 million in national competitive grants

31,000+ academic publications, generating over 520,000+ citations

1,553 higher degree by research completions

About Sydney Dental School

The University of Sydney School of Dentistry (Sydney Dental School) is ranked amongst the top dental schools internationally, and is one of the largest dental schools in Australia. It has campuses in the Sydney Dental Hospital (in inner-eastern Sydney) and the Westmead Centre for Oral Health at Westmead Hospital (in western Sydney), and outreach service-based teaching is undertaken across the state of NSW.

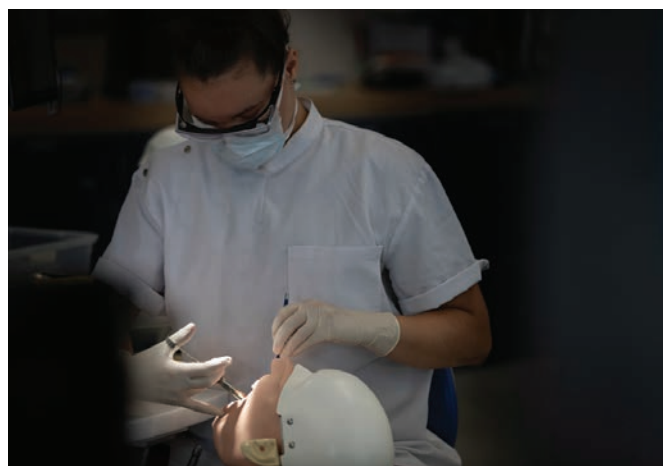
The school's mission is to "put the mouth into health", integrating oral and systemic health. This is achieved by specific research and educational programs and by strengthening partnerships across the public, private, corporate and other sectors.

The school offers a four-year graduate-entry Doctor of Dental Medicine program and a three-year Bachelor of Oral Health program. It also offers Australia's most comprehensive range of postgraduate and continuing education programs designed to train specialist practitioners across a wide range of disciplines. Its undergraduate, graduate and postgraduate programs attract large numbers of international applicants. It has a rigorous research training program to produce research scholars of international standing. Our premium educational offering is underpinned by our connections to the Westmead Centre for Oral Health, Sydney Dental Hospital, Nepean Hospital and South Western Sydney Local Health District's centres for oral health, but also with other local health district dental hospitals in remote, regional and rural NSW.

Our school is based around integrated research, teaching and clinical practice. Our premium educational offering is underpinned by our connections to Sydney Dental Hospital, Nepean Hospital and the Westmead Centre for Oral Health, but also with other local health district dental hospitals in remote, regional and rural NSW.

We're consistently ranked as one of Australia's top dental schools, where our students benefit from the opportunity to gain clinical experience in functioning dental hospitals, learn from diverse real world oral health issues, interact with dental and medical professionals, and develop an understanding of current healthcare issues.

Our simulation clinics based at Sydney Dental Hospital and the University's Camperdown Bligh Building also help students develop their confidence and skills to perform new procedures in a safe environment.





About the position

We are seeking to appoint an outstanding senior academic as Chair of Lifespan Oral Health (Associate Professor or Professor, research focused position) with a passion for improving oral and general health outcomes for the population.

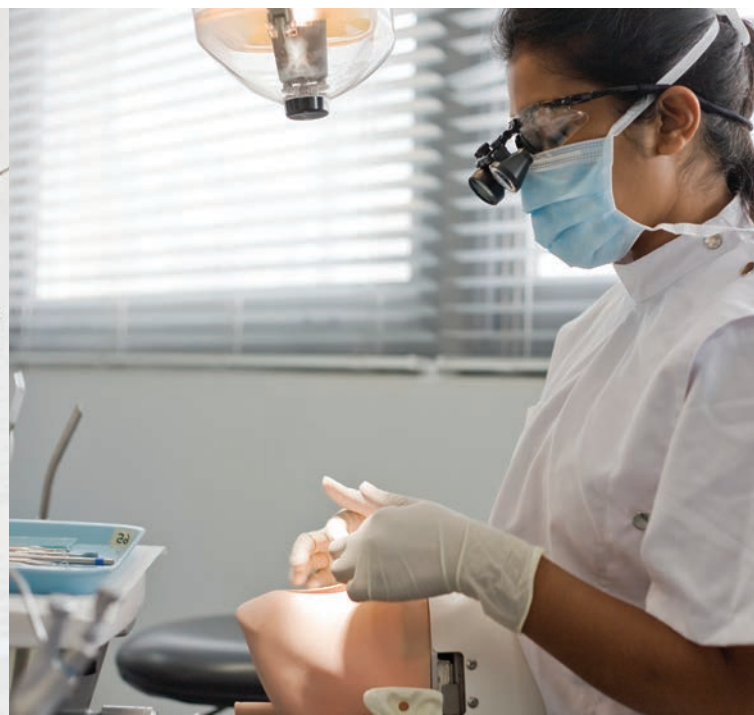
Position overview

Join us as Chair of Lifespan Oral Health at the University of Sydney School of Dentistry where you'll lead a research team and work with other faculty research leaders to shape the future of health in this country and beyond. With a focus on improving oral and general health outcomes for the population, you'll use implementation science principles and interdisciplinary collaboration to lead primarily externally-funded translational research teams to reduce the burden of oral disease in all populations.

As an accomplished academic with a passion for improving oral health outcomes, you'll maintain your reputation by actively contributing to research and scholarship, academic debate, policy development, and innovation within the Sydney Dental School and the broader community. You'll mentor staff within the Sydney Dental School and engage with students to instill the importance of oral health and promote oral-systemic connection.

As senior research leader, you'll work to improve the reputation of the University of Sydney and the Faculty of Medicine and Health (FMH) by fostering a culture of excellence and guiding academic staff and students towards success. With the authority to make decisions in the day-to-day operation of the role in line with the research and teaching goals of the agreed strategy, you'll have a significant research leadership role encompassing the breadth of the FMH.

We're looking for an outstanding academic with a national or international reputation in oral health research, strong record of training research students and early career researchers, and a wide network of established relationships with key academic, industry and professional institutions, partners, and stakeholders. Join us and use your talents to make and shape the future of healthcare.





Skills, capabilities and experience

You will be a PhD-qualified academic or equivalent research doctorate in a relevant field of study. Regardless of your original health profession background, you will possess a national or international reputation in oral health research, supported by a strong research profile including competitive grants, publications, recognition within the research community and research impact.

You will have a distinguished record of academic teaching excellence demonstrated by successful student outcomes, impact on student learning, awards/prizes, and innovation. You will have a vast network of established relationships with key academic, industry, and professional institutions, partners, and stakeholders to enhance the discipline's standing and that of the School, Faculty, and University.

You will have demonstrated experience in translating research into practice, including an understanding and application of implementation science in their research. You will have advanced stakeholder management skills with proven capability to build and maintain strategic partnerships and collaboration with diverse groups, including clinicians, staff, academic institutions and other organisations, towards research success. Finally, you will have excellent written and oral communication skills to engage different audiences.



About the University of Sydney

As Australia's first university, we have been harnessing the power of education and research to transform the world for over 170 years. Proud as we are of our history, we are even more excited about our future.

The University of Sydney is one of the world's leading comprehensive research and teaching universities – ranked 52nd in the world for impact¹ and 4th in the world for graduate employability.²

We teach and research across an incredible breadth and depth of subjects and disciplines with the aim of making lives better, not just by producing leaders, but by supporting the development of knowledge and innovation with genuine benefit to society.

Year after year, we are ranked among the top universities in the world for the quality of our teaching and research, graduate employability, breadth of subjects, student mobility, and generosity of scholarships.

We are a diverse community of students and staff from more than 170 countries. Our values – courage and creativity; respect and integrity; diversity and inclusion; openness and engagement – are embedded into everything we do, creating a culture in which every member of our community is valued and supported to thrive.

Our campuses are on lands that are home to the oldest continuous cultures in the world, and we celebrate this culture and its centrality to our work and study.

We aim to create and sustain a university in which, for the benefit of both Australia and the wider world, the brightest researchers and the most promising students from all social and cultural backgrounds can thrive and realise their full potential¹.

1. THE Impact Rankings 2022
2. 2022 QS Graduate Employability Rankings



Our rankings

1st

in Australia and 4th in the world
for graduate employability¹

28th

in the US News & World Report
Rankings 2023⁵

=19th

globally in the 2024 QS World
University Rankings²

60th

in the Times Higher Education World
University Rankings 2024⁴

7

in sustainability: QS World
University Rankings 2024³

=73rd

in Academic Ranking of World
Universities (ARWU) 2023⁶

1. QS Graduate Employability Rankings 2022
2. QS World University Rankings 2024
3. QS World University Sustainability Rankings 2024
4. Times Higher Education World University Rankings 2024
5. US News & World Report Rankings 2023
6. Academic Ranking of World Universities (ARWU) 2023

Our World Rankings

Our research

The University of Sydney is recognised as one of the top research universities in the world. All of our 22 broad fields of research are ranked at world standard or above in the latest Excellence in Research Australia report, and we are =19th globally in the 2024 QS World University Rankings.

We have developed nine new research initiatives for the 2032 Strategy to ensure that by 2032, our diverse and inclusive academic community will be renowned globally for discovering new knowledge and delivering solutions that benefit us all¹.

Sydney is home to several multidisciplinary research initiatives, which bring together academics from diverse fields to lead innovation in established and developing areas of strength, while also creating educational opportunities for our students. The University of Sydney Nano Institute, for example, is taking the field of nanoscience to new levels through multidisciplinary projects and dedicated scholarships for students and research fellows.

Research excellence requires the latest technology, which is why we're investing in core research facilities that provide access to high-end infrastructure, along with a range of services to assist researchers with specialist applications. Our eight facilities include: the Sydney Manufacturing Hub, Sydney Analytical, Sydney Mass Spectrometry, Sydney Cytometry, Sydney Informatics Hub, Sydney Microscopy and Microanalysis, Sydney Imaging and the Research and Prototype Foundry.

2022 saw a landmark \$478 million capital investment to build a nation-leading biomedical precinct to fast track research and patient care in New South Wales, in partnership with the Sydney Local Health District.

Key statistics

150+

research centres and networks

8

world-class core research facilities

6

multidisciplinary institutes

8

ARC Centres of Excellence as lead

5

Cooperative Research Centres

28

Partner Universities across North American, Asia and Europe,

Figures correct at December 2022
<https://www.sydney.edu.au/research/centres.html>

The Sydney Biomedical Accelerator will create a first-in-Australia, 36,000m² health, education, and research precinct co-located at Royal Prince Alfred Hospital and our Camperdown campuses, to tackle some of our most complex health challenges, including cancer and neurodegenerative diseases.

We are also building strategic partnerships with leading corporate, community and government organisations to address authentic issues, and develop products, systems and services at the forefront of business. Highlights include trialling the world's first complete automated robotic system for recycling soft plastics with Sydney-based recycling provider IQ Renew; a prototype sensor system for the Royal Australian Air Force; a new cryogenic control chip set to enable a transformational scaling up of quantum computing at the Microsoft Quantum Laboratory; Australia's Mental Health Think Tank, modelling for the Australian Housing and Urban Research Institute; and 24 research led start-ups and innovative business collaborations through the Sydney Knowledge Hub.

In 2022 we had significant commercialisation activity, with 42 commercial deals closed and another 42 prospects in the pipeline. Recent highlights included Developing the world's first long-range, highrate WiFi system that allows wireless signals to travel several kilometres and battery tech company Gelion becoming the first University of Sydney spin-out to list on a stock exchange. The innovation pipeline remains strong at both ends of the lifecycle, with 80 invention disclosures submitted over the course of the year and two University spin-off companies created, in which we continue to hold equity.

Learn more about our research and its impact via [sydney.edu.au/research](https://www.sydney.edu.au/research)

1. <https://intranet.sydney.edu.au/strategy-governance/2032-strategy.html>





Our campuses

Located close to the heart of Australia's largest and most international city, our Camperdown/Darlington Campus features a mixture of iconic Gothic-revival buildings and state-of-the-art teaching, research and student support facilities.

The University has several other facilities across the state, for example, our farms and research units at the Camden Campus, and clinical schools in hospitals across the city and in rural NSW. Other faculties and schools have their own dedicated campuses, such as the Sydney Conservatorium of Music in the heart of Sydney's CBD, near the Sydney Opera House, and Sydney Dental School in Surry Hills.

The future of our campuses

We are investing in significant infrastructure development to meet the changing needs of 21st century students and staff and keep our work at the cutting edge.

Work is well underway on our new Engineering and Technology Precinct; and the Susan Wakil Health Building, a multidisciplinary facility that co-locates the faculties of nursing and health sciences near the Royal Prince Alfred Hospital, recently opened at the end of 2019.

The Chau Chak Wing Museum, near the Quadrangle on our Camperdown Campus, opened in 2021 and facilitates better object-based learning and public access to our significant collections of art, antiquities, culture and natural history. Exhibitions display historic and contemporary art and tell diverse stories from the perspective of Australia's First Nations People alongside the ancient cultures of the Mediterranean, Middle East, China and beyond.

A key focus of the University's next era of strategic growth is western Sydney, where we are working towards the establishment of a large-scale multidisciplinary research and teaching campus at Parramatta/Westmead, focusing on areas that address the challenges of disruption at the intersection of technology and the human experience.

The upgraded Westmead Hospital Clinical Precinct will position us at the centre of transformational health services, research and education in western Sydney. To date, we have invested around \$80 million at Westmead, providing new education facilities, upgrades to existing spaces, and a suite of programs and initiatives alongside our partners at the precinct.

For more about campus developments, visit sydney.edu.au/building-projects

Our teaching

Recognised as leaders in education and student experience, the University of Sydney is ranked 4th in the world and 1st in Australia for graduate employability¹. Looking ahead to a transformed future of work, it is our ambition that our students graduate with the skills and knowledge to adapt and thrive in a changing world.

Across the last six years, we have transformed our undergraduate curricula with our future students front of mind. The reimaged framework embeds all undergraduate degrees with graduate qualities for the 21st century, an emphasis on industry experience and global perspectives and common components to support flexibility and cross-disciplinary learning.

We have created a new high achiever's stream to extend enrichment opportunities, and a new double degree option. Through one extra year of study, students have greater access to advanced coursework and research pathways.

Our courses connect students with industry experts and potential employers through internships and collaborative projects.

We also have the largest global student mobility program

in Australia, partnering with more than 250 universities in more than 40 countries to provide wide opportunities for exchange and study abroad.

We offer our students an unforgettable student experience through a diverse range of community and co-curricular opportunities. Our student union has been the heart of campus life since 1874, organising events and programs through more than 250 student clubs and societies.

Paving the way for the future of our executive education and postgraduate coursework is our first micro-credential, the new Sydney Professional Certificate. We will be delivering more opportunities for mid-career postgraduate education and lifelong learning, high quality online and hybrid models for postgraduate teaching, and shorter-form award and non-award postgraduate programs.

We are also introducing a new coursework component to our PhD degrees – a first of its kind in Australia – and broadening the coursework options for our other postgraduate research degrees to support research capabilities and the success of our students in a changing world.

1. QS Graduate Employability Rankings 2022



Our distinctive alumni

Our alumni have achieved remarkable feats and are consistently ranked among the world's most employable graduates. They include Nobel laureates, Pulitzer prize winners, Australian prime ministers, humanitarians, teachers, inventors, medical innovators, and thousands like them who have changed lives all around the world – people like Eddie Woo, who is revolutionising the way we teach mathematics; Dr Anna Lau, who is making inroads in the fight against Ebola; Colin Sullivan, who invented the continuous positive airway pressure (CPAP) machine, a life-saving device for sleep apnoea; Jack Manning Bancroft, Indigenous mentor and founder of the Australian Indigenous Mentoring Experience (AIME) program; and Marie Bashir, former Chancellor of the University and Governor of New South Wales.

– sydney.edu.au/about-us/famous-alumni

Key statistics

69,200

total student enrolments¹

25,345

postgraduate coursework students¹

30,348

international enrolments¹

20:1

student:staff ratio²

39,507

undergraduate students¹

9,064

staff (full-time equivalent)³

4,348

postgraduate research students¹

430k+

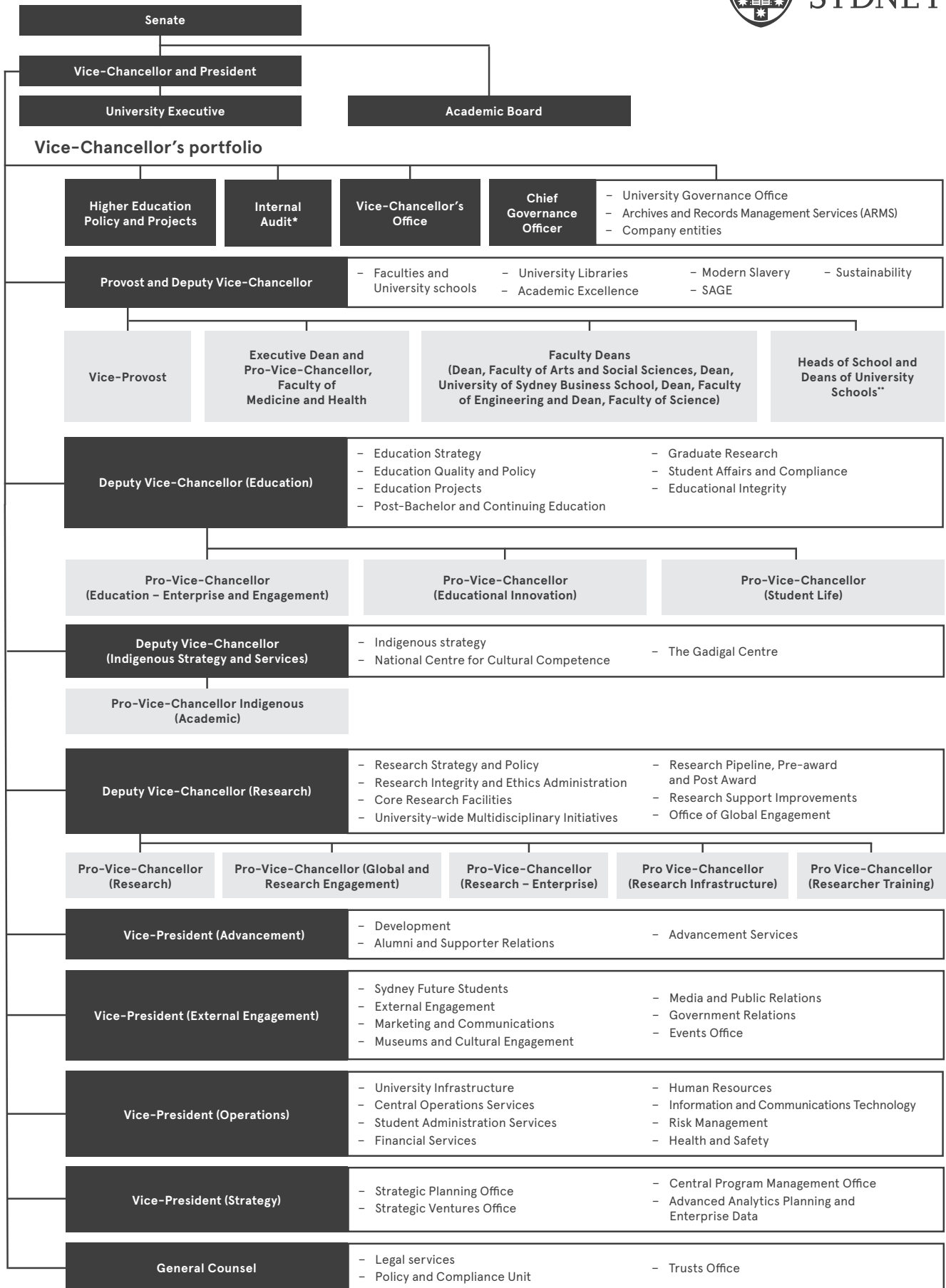
alumni worldwide⁴

1. University of Sydney Annual Report 2022
2. Student Staff Ratio by Faculty and School as at 31 March 2021
3. Staff (FT/FFT & Casual) FTE by Classification & Appointment Term, as at 25 May 2022
4. University website June 2023



The University of Sydney Organisational Structure

The University of Sydney Organisational Structure



* Internal Audit has a reporting line to the Vice-Chancellor and President but the Office of General Counsel manages its daily activities.
 ** These roles include the following: Head and School and Dean, University of Sydney School of Architecture, Design and Planning; Head of School and Dean, the Sydney Conservatorium of Music and Head of School and Dean, the University of Sydney Law School.

Sydney in 2032 Strategy

As we look to the next decade, we want our work to be more compelling, and more important to society, than at any other time in our history. Under our 2032 strategy we will pursue aspirations focused on delivering sustained and consistent excellence and developing the flexibility and resilience to keep pace with – or ahead of – the changes we will inevitably experience in an increasingly fluid and unpredictable world. These aspirations all align to our most important way finder for the next decade: our strategic vision for 2032.

OUR ASPIRATIONS

Our aspirations

We want to be known for the power our world-class research and teaching has to transform people's lives, and for the pride it generates throughout our city, our state and our nation.

Where to next?

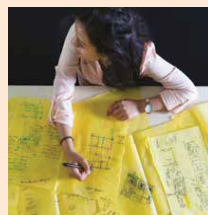
This is the moment for us to come together as a University community to develop and commit to an integrated action plan to deliver on this strategy.

Our engagement process

A variety of digital and face-to-face opportunities enabled our staff, students and alumni the opportunity to contribute to our 2032 vision.

Building on the First Nations knowledge of these lands, we are Australia's first university, Sydney's university and a great global university

Our student-focused education is transformational



Our community thrives through diversity



Our research is excellent, tackles the greatest challenges and contributes to the common good



A better place to work, and a place that works better

Wherever we gather, we do our best work

We lead with high trust and high accountability to deliver high performance

Our policies, processes, systems and services help us achieve our ambitions

We are valued as outstanding partners

To learn more about our strategy please visit: sydney.edu.au/strategy

Higher education In Australia

While Australia's educational institutions may be younger than their counterparts in other parts of the world, they are consistently ranked in the top tier for research and education.



Australia is home to a large number of world-leading universities which continue to rank among the world's best in annual reports published by leading bodies such as QS, THE and ARWU.¹ Currently, there are seven Australian institutions that rank in the top 100 universities worldwide.²

Our education system is highly popular, with most young adults choosing to pursue tertiary education. Recent Organisation for Economic Cooperation and Development (OECD) data shows an increase to 54.3% in the number of young Australians with a tertiary degree – up 11% in the last decade and well above the OECD average of 48%.³ This is reflected in Australia's low unemployment and highly skilled workforce.

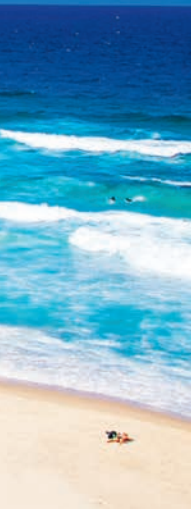
Australia is also highly rated in the U21 Ranking of National Higher Education Systems, ahead of France, Germany, Norway and Japan.⁴

In Australia, outstanding education is aligned with world-leading research. Australia is home to just 0.3 per cent of the world's population, yet we produce around three per cent of the world's research⁵. Additionally, more than 92%

of Australian university research is rated as world class or higher⁵. All of Australia's 43 universities engage in research with the latest Excellence in Research report showing that universities in Australia are at the global forefront of research in a large number of diverse fields. At the University of Sydney, all of our 22 broad fields of research are ranked at world standard or above.⁶

In terms of publications, Australia has the fourth-largest number of highly cited researchers in the world, with 332 researchers making the 2021 Clarivate Analytics Highly Cited Researchers list⁷. Australia provides a fantastic environment for international researchers, including intellectual capital and high quality infrastructure.⁸

Institutions in Australia are well-known and highly regarded in a range of subject areas including arts and humanities, medicine, engineering and technology and physical sciences. Sydney and New South Wales are home to seven dedicated medical schools at universities, eight medical research hubs and fourteen major teaching hospitals⁹, in addition to several research centres, and the Sydney Innovation and Technology Precinct.



Images of Australia: Bondi beach; Uluru; Sydney Harbour Bridge; Bondi Icebergs outdoor pool; Great Barrier Reef

Australia offers a unique opportunity to engage with Asian, American and European markets. Sydney in particular is a hub of research, innovation activity and a centre of business. The fact that more than 600 multinational companies run their Asia Pacific operations from Sydney,¹⁰ shows how industry, universities and government can work together.

The value of universities is very clear in the Australian context. Universities contribute some \$150 billion¹¹ to the Australian economy; are in the vanguard of Australia's research, development and innovation agenda; constitute an export industry worth \$20.7 billion annually,¹² and provide direct and indirect employment to a quarter of a million Australians.¹³

Australia has been identified as the third most popular study destination for international students, with almost half a million students studying Australian courses in January 2023¹⁴. These students report 93% satisfaction scores for their overall living experience here¹⁵ and almost all of our major cities are cited among the world's top 100 most appealing places to study.¹⁶

In addition to our outstanding research and education, Australia ranks 4th in The Economist's top ten most livable cities¹⁷ and 12th in the world and 2nd in the Asia region on the World Happiness Report 2022¹⁸. Australia's lifestyle, personal freedom, trust in institutions, high incomes and spirit of generosity are major factors in this ranking and why it is a popular place to live, work and study.

1. QS World University Rankings 2023; Times Higher Education (THE) World University Rankings 2023 and Impact Rankings 2022; 2022 Academic Ranking of World Universities (ARWU)
2. 2022 Academic Ranking of World Universities (ARWU)
3. Education at a Glance 2022, *OECD Indicators*,
4. U21 Ranking of National Higher Education Systems 2020, sponsored by Universitas 21
5. Australian Research Council 2019-2020
6. Excellence in Research for Australia (ERA) 2018 report, produced by the Australian Research Council (ARC)
7. Clarivate Analytics Highly Cited Researchers List 2021
8. Partnering with Australia on Innovation, Science and Research 2020
9. Sydney and NSW Scientific Research 2011
10. Tourism Australia 2021
11. Deloitte report: The importance of universities to Australia's prosperity, 2015
12. Australia's Top 25 Exports, Goods and Services 2021-2022, report by the Australian Government Department of Foreign Affairs and Trade
13. Government NSW 'Study NSW' online resource 2019: www.study.sydney/programs/nswglobalconnections/resources-for-employers
14. Australian Government Department of Education - International student numbers by country, by state and territory 2023
15. 2020 International Student Experience Survey
16. QS Best Student Cities ranking 2023
17. The Economist's global liveability index
18. World happiness report 2022

Living and working in Sydney

Surry Hills Campus

- Sydney Dental School

Camperdown/Darlington Campus

- Australia's first university campus, established in 1850

CBD Campus

- The University of Sydney Business School

Sydney Conservatorium of Music Campus

Australia's biggest city, Sydney is consistently ranked as one of the world's best cities for quality of living and safety.¹

From stunning Sydney Harbour to iconic beaches such as Bondi, Sydney's natural beauty is world famous. The wider city area is home to gorgeous national parks where you can encounter Australian wildlife, hidden waterfalls and private beaches. The city is surrounded by coastline to the east, the Blue Mountains to the west and bushland to the north and south.

Sydney ranks 4th in The Economist's top 10 most livable cities² and is one of the most multicultural cities in the world, with a proudly diverse and inclusive culture.³ This multiculturalism has shaped the local customs, leisure activities, cultural scene, shops and cuisine. Within a short walk of our Camperdown Campus, you can find restaurants serving Thai, Vietnamese, Japanese, Korean, Italian, Mexican, Indian, Pakistani, Spanish, Chinese, Malaysian, Greek, Lebanese and Turkish food.

The latest ERA report showed that much of Australia's research is above world standard, particularly at the University of Sydney, where all of our research is ranked at world standard or above.⁴

1. Mercer Quality of Living survey 2019; PwC Cities of Opportunity report; Economist's Safe Cities Index 2021
2. The Economist's global livability index 2023
3. Australian Bureau of Statistics 2021 census
4. Excellence in Research for Australia (ERA) 2018 report, produced by the Australian Research Council (ARC)

An aerial photograph of Sydney, Australia, showing the Sydney Harbour Bridge in the foreground, the city skyline, and the harbour with many sailboats. The image is used as a background for the text boxes.

Research farms Southern Highlands

150 km ↑

- Marulan
- Arthursleigh Farm
- Hoskinstown
- Molonglo Observatory
- Synthesis Telescope

Camden and Cobbitty Campus and farms

60 km ↑

- including the Sydney School of Veterinary Science; Sydney Institute of Agriculture; and the School of Life and Environmental Sciences

Parramatta/Westmead

- Proposed Parramatta/Westmead Campus
- Sydney Dental School, Westmead Centre for Oral Health
- Clinical School, Westmead Hospital
- Clinical School, Westmead Children's Hospital

Rural campuses

Broken Hill 1150 km ↑

- Broken Hill University Department of Rural Health

Dubbo 400 km ↑

- Sydney School of Medicine

Orange 250 km ↑

- School of Rural Health

Lismore 750 km ↑

- The University Centre for Rural Health

Narrabri 530 km ↑

- I.A. Watson Grains Research Centre

Liverpool Plains 360 km ↑

- E.J. Holtsbaum Agricultural Research Institute

Additional details

Term of Appointment

The successful candidate will be offered a 5-year fixed term position on a full-time basis, with the possibility for renewal subject to performance and funding agreement. The appointment is subject to completion of satisfactory probation period for new appointees. Visa sponsorship and relocation assistance will also be provided if required.

You will be offered a competitive remuneration package commensurate with the responsibilities of the position and the candidate's relevant experience and qualifications.

Salary

The successful candidate will be offered an attractive remuneration package commensurate with the responsibilities of the position and the candidate's relevant experience and qualifications.

Salary sacrificing options are also available under the University's Flexible Remuneration Packaging Scheme. Provision is also made for limited private consulting in accordance with the University's regulations.

A range of superannuation options will be available to the successful candidate. By law, the University is required to make employer superannuation contributions equivalent to 11% of salary (called 'Superannuation Guarantee' contributions). The successful candidate may elect to have Superannuation Guarantee contributions made to a complying fund of their choice, or to have a higher level of contributions (currently 17% of salary) made to 'UniSuper'. The components of the successful candidate's remuneration package will reflect their choice of superannuation arrangements.

Conditions

Your employment is conditional upon the completion of all role required pre-employment or background checks in terms satisfactory to the University. Similarly your ongoing employment is conditional upon the satisfactory maintenance of all relevant clearances and background check requirements. If you do not meet these conditions, the University may take any necessary step, including the termination of your employment.

Working Environment and Staff Benefits

If you want to engage with brilliant minds, are willing to push boundaries, and believe in making a positive difference, you've come to the right place. Our people come from all cultures and backgrounds and enjoy a true sense of community and belonging.

We recognise that our talented staff are invaluable and we support them to achieve their career ambitions and follow their dreams. Using our outstanding local and global networks, we can offer flexibility, responsibility, personal and professional development, and much more.

We welcome open minds, curiosity, and a readiness to tackle big questions – and we reward it accordingly. Our people are part of an exciting environment where development is encouraged and intellectual pursuits foster a sense of purpose and confidence. We are also committed to diversity and equal opportunity. We're proud to be recognised as a gold employer of choice for the Australian Workplace Equality Index. To find out more about our work on diversity and inclusion, please visit: sydney.edu.au/about-us/vision-and-values/diversity.html

In addition to a competitive base salary, we offer a wide variety of financial and non-financial benefits to our staff. To find out more, please visit: sydney.edu.au/about-us/careers-at-sydney/staff-benefits.html

Relocation Assistance for Candidates Moving to Sydney

Where the successful candidate is required to move to Sydney from their present place of residence, the University will assist with reasonable air travel and relocation expenses for the candidate and accompanying family members.

All prospective or appointed staff members to the University must have the relevant right to work in Australia before commencing employment at the University. Visa sponsorship will be made available if required.



How to apply

At the University of Sydney, our shared values include **diversity and inclusion** and we strive to be a place where everyone can thrive. We are committed to creating a University community which reflects the wider community that we serve. We deliver on this commitment through our people and culture programs, as well as key strategies to increase participation and support the careers of **Aboriginal and Torres Strait Islander People, women, people living with a disability, people from culturally and linguistically diverse backgrounds**, and those who identify as **LGBTIQ**. We welcome applications from candidates from all backgrounds.



For further information

For a confidential discussion about the role, or if you require reasonable adjustment or support filling out this application, please contact:

Lucy Porter

**Senior Talent Partner, Senior Talent Acquisition,
Recruitment Operations, Human Resources**

+61 429 771 115

lucy.porter@sydney.edu.au

For role specific questions please email: **Professor Heiko Spallek, Head of School and Dean, The University of Sydney Dental school on: heiko.spallek@sydney.edu.au**

Address for applications

All applications must be submitted online via the University of Sydney careers website. Visit sydney.edu.au/recruitment/ and search by reference number 0115802 for more information and to apply.

Current University of Sydney Employees: If you are a current employee of the University and would like to submit an application, you may then submit your application by logging into your Workday account. Navigate to the Career icon on your Dashboard once logged into **Workday** and click on the USYD Find Jobs report to apply.

Preparing your application

Prepare your application to include the below.

- Covering letter including a statement that summarises how your skills, capabilities and experience meet the requirements of the position.
- Your curriculum vitae or resume including:
 - degrees, qualifications, registration (or eligibility for registration)
 - positions held (including details of the most recent and significant career appointments) and major achievements
 - details of management and/or professional experience
 - current and proposed research interests
 - research outputs including a list of your publications (in chronological order, with your most recent publication listed first)
 - competitive grants won and current/future involvement
 - courses taught, students supervised and curriculum development activities
 - fellowships, professional memberships and contributions to professional associations
 - contributions to your academic field, for example, involvement with editorial and review boards, invitations to conferences, consultancies undertaken

If possible, include the names and contact details of a broad mix of a minimum of five referees who can collectively comment on all aspects of your background and experience. This can otherwise be provided later in the process.



USEFUL LINKS

Sydney Dental School

- sydney.edu.au/medicine-health/schools/sydney-dental-school

World rankings

- sydney.edu.au/world-rankings

Strategic Plan

- sydney.edu.au/strategy

Careers at Sydney

- sydney.edu.au/jobs

Governance and structure

- sydney.edu.au/organisational-structure

Annual Report

- sydney.edu.au/annual-report

News

- sydney.edu.au/news

Faculties and schools

- sydney.edu.au/faculties